

Regional Multi-Jurisdictional Integrated Traffic Management



International Seminar on ITS in Road Network Operations

August 14–15, 2006

Joseph K. Lam, P.Eng.
President, Systems Business
Delcan

Chairman
ITS Canada

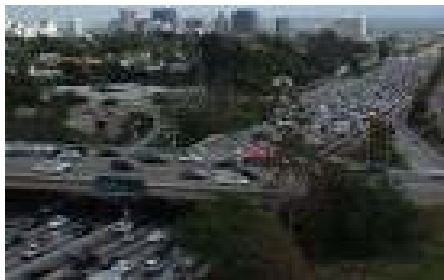
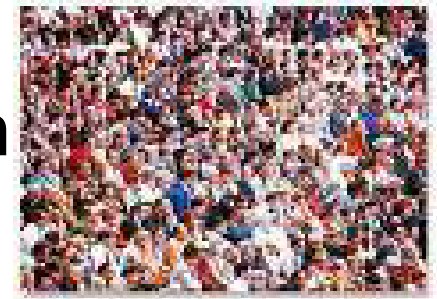
Need for Regional Integrated Traffic Management

➤ Continuous Growth in:



Economics

Population



Traffics

Geographical
Coverage of
Urban Cities



Need for Regional Integrated Traffic Management

~SOLUTION~

**Regional Multi-Jurisdictional Integrated
Traffic Management**



Regional Integration of Intelligent Transportation System (RIITS)



Integrated Regional Signal System (IRSS)



Regional Traffic Management Centre (RTMC)



Regional Advanced Traveller Information System (RATIS)

Regional Integration of Intelligent Transportation System (RIITS)



RIITS Network Objectives

- Provide Multi-Modal Real-Time Information
- Facilitate Multi-Jurisdictional co-operation and data sharing



RIITS for Los Angeles

Participating Agencies:

- MTA Bus Operations
- Port of Long Beach
- LADOT
- LAX Airport
- Access Services, Inc
- Santa Monica Big Blue Bus
- Caltrans District 7
- LA County Fire Dept.
- MTA Rail Operations
- LA County Public Works
- Long Beach Transit
- LA County Sheriff Dept.
- CHP
- LAPD
- Port of LA

Types of Traffic Information Collected

- Traffic Flow Conditions
- CCTV Camera Video Images
- Changeable Message Sign Displays
- Events (Scheduled and Unscheduled)
- MTA Bus Locations
- MTA Train Locations

Traffic Data Flow

- Arterial Streets in the City of LA
- Freeways in LA County (Caltrans District 7)
- Typically derived from In-pavement loops
- Collected at regular intervals
- Data consists of volumes, occupancies, and average speeds
- Displayed as colour-coded average speeds at points along roadways on map
- Data is useful to assess the impact of incidents on agencies operations

Speed [Close] [Maximize] [Minimize]

09/01/2004 10:50 AM

RIITS CaltransD7

Avg. Speed: 29 mph

HOV: 56 mph

405 South @ SKIRBALL/MULHOLLAND

Internet

Logout

riits 1.0.7

Regional Integration of Intelligent Transportation Systems

Map Bus Rail Events

Map Legend

- Video - Live
- Video - Snapshot
- CMS - Active
- Event - Unscheduled
- Event - Scheduled
- Bus - Alarmed
- Bus - Active
- Bus Timepoint
- Metro Train
- Metro Rail Stop
- Metro Red Line
- Metro Blue Line
- Metro Gold Line
- Metro Green Line

Freeway Speeds

- 0 - 20 mph
- 21 - 34 mph
- 35 - 49 mph
- > 50 mph
- No Data Available

City Street Speeds

- 0 - 10 mph
- 11 - 20 mph
- > 21 mph
- No Data Available

Start | RIITS - Los Angel... | Speed | Document1 - Micr... | 11:39 AM

Closed-Circuit TV (CCTV)

- Video is live and in colour
- Video is viewable on PC monitors
- Selectable on a map display
- Viewable as streams and “snapshots”

RIITS CaltransD7
Video # 196

09/01/2004 11:40 AM

real
1
PLAYER

110 South @ AVENUE 26 OFF RAMP

Done Internet

Logout
riits 1.0.7
Regional Integration of Intelligent Transportation Systems

Bus

Rail

Events

NORTH
NE

SW
SOUTH
SE

Bus Timepoint

- Bus Timepoint
- Metro Train
- Metro Rail Stop
- Metro Red Line
- Metro Blue Line
- Metro Gold Line
- Metro Green Line

Freeway Speeds

- 0 - 20 mph
- 21 - 34 mph
- 35 - 49 mph
- > 50 mph
- No Data Available

City Street Speeds

- 0 - 10 mph
- 11 - 20 mph
- > 21 mph
- No Data Available

Start
RIITS - Los Angel...
Video
Document1 - Micr...

11:40 AM

Changeable Message Sign (CMS)


- Displays message content on sign as a part of freeway incident response
- Selectable on a map display

https://63.192.224.100 -... | https://63.192.224.100 -... | https://63.192.224....

RIITS Incident


Event ID: 97239
 Route/Street: I-10
 Direction: West
 Cross Street 1: FREMONT
 City/Area: ALHAMBRA
 Occurrence Date: 06/07/05
 Occurrence Time: 2:20 PM
 Estimated Duration: 04 Hours
 Lanes Blocked: 4
 Issuing Agency: Caltrans-D7
 Description: Accident 10W @ FREMONT All lane(s) blocked
 Est. clearance time: 18:20

RIITS Caltrans-D7 Camera #135




06/07/2005 04:03 PM
 10 West @ FREMONT AVE

RIITS Caltrans-D7 Sign #30



Started at : 06/07/2005 03:38 PM
 10 East @ CITY TERRACE O/C

RIITS Caltrans-D7 Sign #73



Started at : 06/07/2005 11:45 AM
 10 West @ PUENTE AVE.

Map Legend

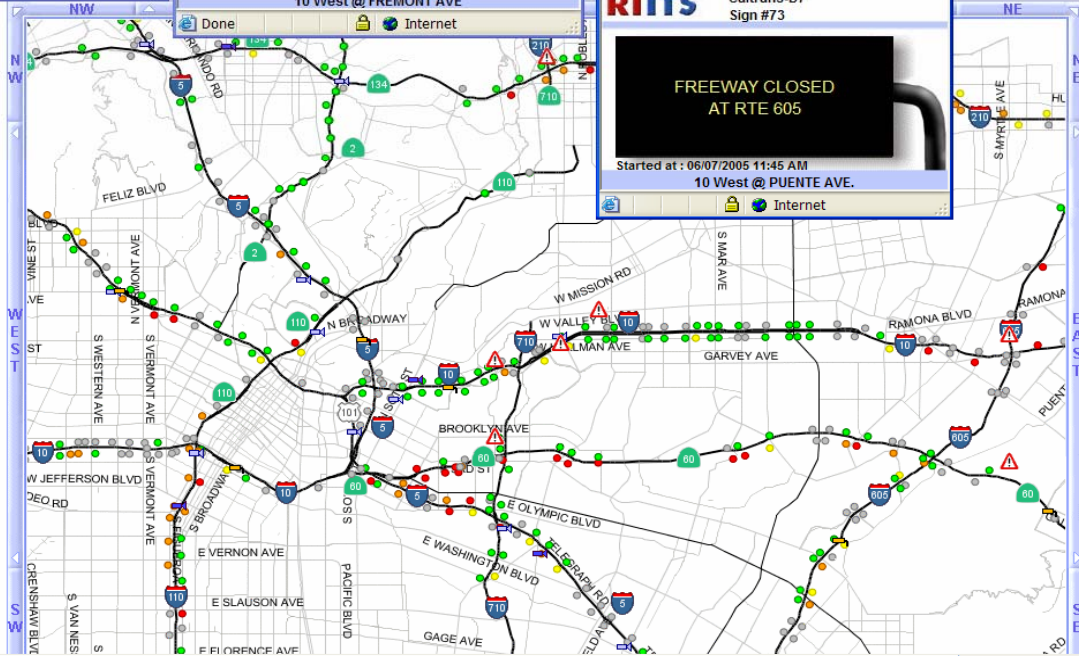
- Video - Live
- Video - Snapshot
- CMS - Active
- Event - Unscheduled
- Event - Scheduled
- Bus - Active
- Bus Timepoint
- Metro Train
- Metro Rail Stop
- Metro Red Line
- Metro Blue Line
- Metro Gold Line
- Metro Green Line

Freeway Speeds

- 0 - 19 mph
- 20 - 34 mph
- 35 - 50 mph
- > 51 mph
- No Data Available

City Street Speeds

- 0 - 10 mph
- 11 - 20 mph
- > 21 mph



Event Data

- Major types of freeway or arterial events
 - Incidents (accidents)
 - Planned construction and maintenance activities
 - Special events
 - Emergency closures
 - Weather and other disasters
- Factors of interest
 - Location, type, estimated duration, impact
 - Data must be updated as event transpires
 - Starting and ending times; starting and ending locations





Logout

ritg_1.0.7

Regional Integration of Intelligent Transportation Systems

Event Summary

Map

Bus

Rail

Events

Unscheduled

Event Id	Agency	Location	City	Start Date/Time	Type	Map
89771	CaltransD7	91 W @ I 710	LONG BEACH	03/24/2004 02:17 PM	Incident	X
89907	CaltransD7	5 S @ LAKEWOOD/BROOKSH	DOWNEY	07/20/2004 02:38 PM	Incident	X
89809	CaltransD7	5 N @ TEMPLIN HWY	LOS ANGELES CO	04/08/2004 12:45 PM	Incident	X
89807	CaltransD7	2 E @ BEG OF FWY	LOS ANGELES	04/08/2004 10:25 AM	Emergency Closure	X
89808	CaltransD7	5 N @ SUNLAND	LOS ANGELES	07/12/2004 10:21 AM	Incident	X

* RIITS Completed Unscheduled Events are in red

Scheduled

Event Id	Agency	Location	City	Start Date/Time	Type	Map
89838	CaltransD7	210 E @ SUNLAND	LOS ANGELES	04/19/2004 03:45 PM	Special	X
89837	CaltransD7	210 E @ PAXTON ST	LOS ANGELES	04/21/2004 03:30 PM	Special	X
89836	CaltransD7	5 N @ LAKE HUGHES	LOS ANGELES CO	04/20/2004 03:25 PM	Special	X
89840	CaltransD7	5 N @ LINCOLN ST	BURBANK	04/20/2004 03:55 PM	Special	X
457	REGIONAL	5 N @ LINCOLN ST	BURBANK	05/29/2004 03:01 PM	Special Closure	X

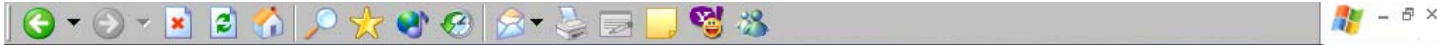
* Active Scheduled Events are in green

Event Details

Transit Information (Bus)

- Bus Routes (updated twice per year)
- Bus Schedules (updated twice per year)
- Bus Locations (real-time)
- Schedule Adherence (real-time)
- Bus Incidents (updated as needed)





[Bus Selection](#)
[Map](#)
[Bus](#)
[Rail](#)
[Events](#)

Select Zone from Map or List 09/01/2004 10:49 AM
 Select Up to 4 Buses to Display



Bus Id	Line	Direction	Line Description	Zone
161	30	East	West Pico Bl./E. 1st St./Floral Dr.	B,C,D
165	30	East	West Pico Bl./E. 1st St./Floral Dr.	B,C,D
5	460	East	Disneyland/Fullerton/Knott's Berry Farm/Norwalk/LA Express	C,E
295	30	East	West Pico Bl./E. 1st St./Floral Dr.	B,C,D
12	460	East	Disneyland/Fullerton/Knott's Berry Farm/Norwalk/LA Express	C,E

Selected Buses

Bus Id	Line	Direction	Line Description	Status	Arrival Time	Timepoint Desc
161	30	East	West Pico Bl./E. 1st St./Floral Dr.	3 min late	10:49 AM	GAAR GARFLD HI ARR
780	180		Hollywood Bl./Los Feliz Bl./Colorado Bl./North Lake Av.	Off Route		
347	180	East	Hollywood Bl./Los Feliz Bl./Colorado Bl./North Lake Av.	On-Time	10:53 AM	COFO COLORADO FAIR OAKS
5	460	East	Disneyland/Fullerton/Knott's Berry Farm/Norwalk/LA Express	7 min early	10:59 AM	KNBY KNOTBER RYFARM

- * On Time Buses are in blue
- * Late Arrival Buses are in red
- * Early Arrival Buses are in green
- * Off Route Buses are in black

[Send To Map](#)

Transit Information (Rail)

- Rail Lines (updated twice per year)
- Rail Schedules (updated twice per year)
- Train Locations for Green Line (real-time)
- Schedule Adherence for Green Line (real-time)
- Rail Incidents (updated as needed)





Zoom Control

Map Bus Rail Events

Map Legend

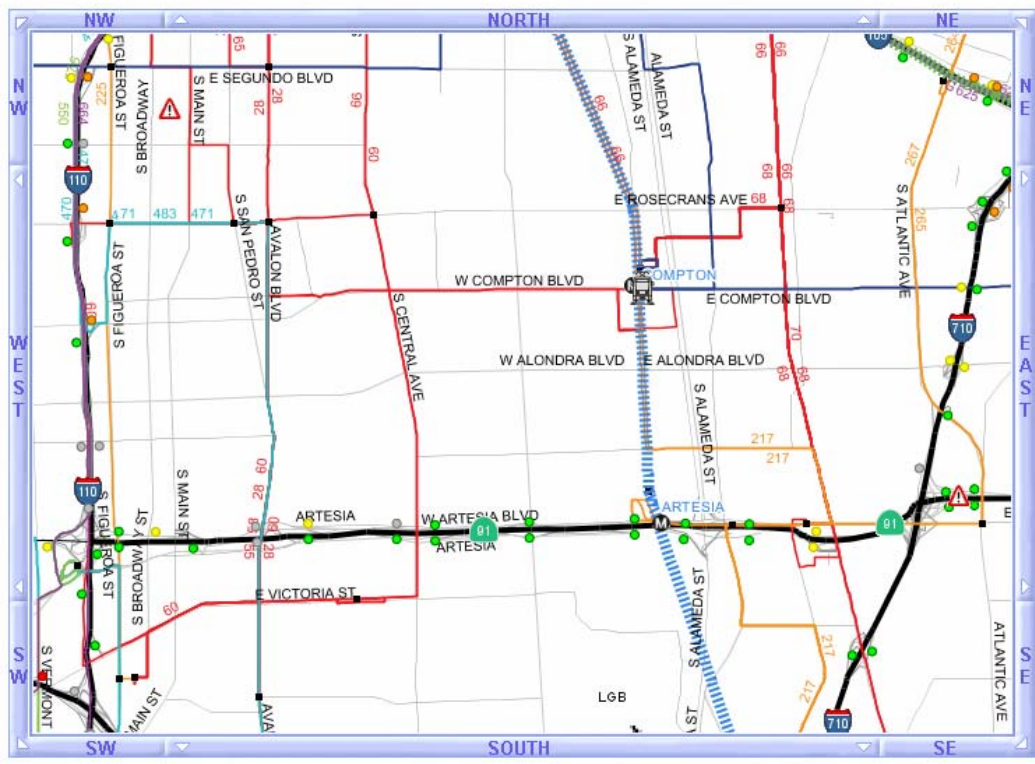
- Video - Live
- Video - Snapshot
- CMS - Active
- Event - Unscheduled
- Event - Scheduled
- Bus - Alarmed
- Bus - Active
- Bus Timepoint
- Metro Train
- Metro Rail Stop
- Metro Red Line
- Metro Blue Line
- Metro Gold Line
- Metro Green Line

Freeway Speeds

- 0 - 20 mph
- 21 - 34 mph
- 35 - 49 mph
- > 50 mph
- No Data Available

City Street Speeds

- 0 - 10 mph
- 11 - 20 mph
- > 21 mph
- No Data Available



Benefits

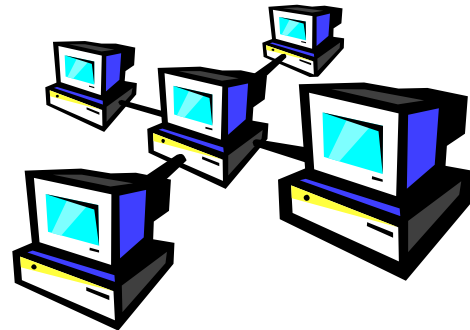
- Encourages Multi-Jurisdictional co-operation
- Enables sharing of real-time information
- Provides single data source for public and private participants
- Improves traveller information dissemination on a regional basis



Integrated Regional Signal System (IRSS)

IS

- High Level System
- System of Systems



NOT

- Centralized Traffic Signal Management System
- Set of Computer or Traffic Signal Controller Specifications

Objectives of IRSS

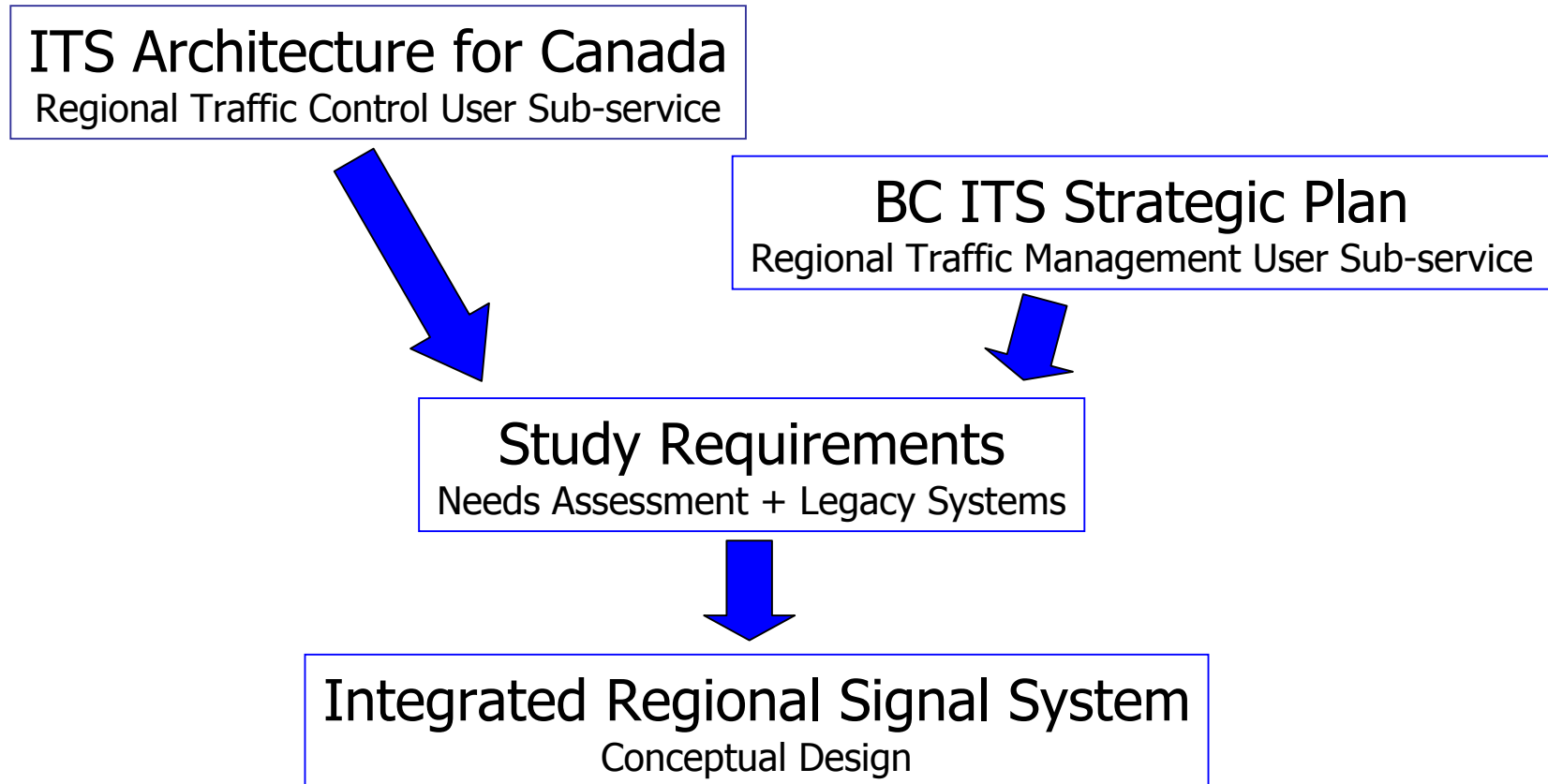
- Provides means to coordinate traffic signal operations within the control region
- Allows individual agencies to still maintain autonomy over their roadways and traffic signals

- Based on Centre-to-Centre (C2C) Communications Protocol
 - Share information
 - Facilitate coordinated operations
 - Send/Receive event notices
 - Provide links for other regional ITS initiatives



IRSS for Vancouver

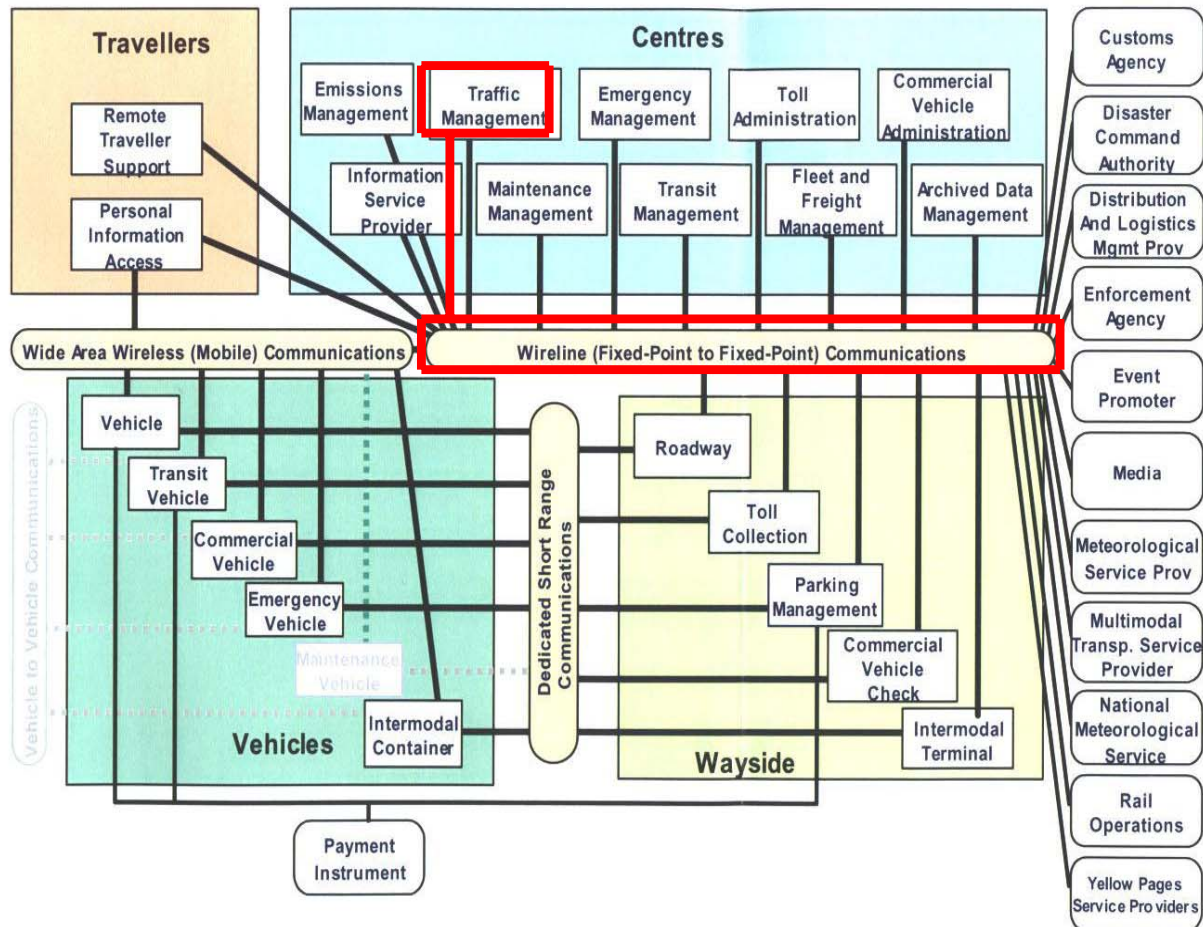
Preliminary System Concept



Definition of ITS Architecture

- Physical representation:
 - Important ITS interfaces
 - Major system components
- Provides a high-level structure:
 - Processes
 - Data flows
- Not a detailed design

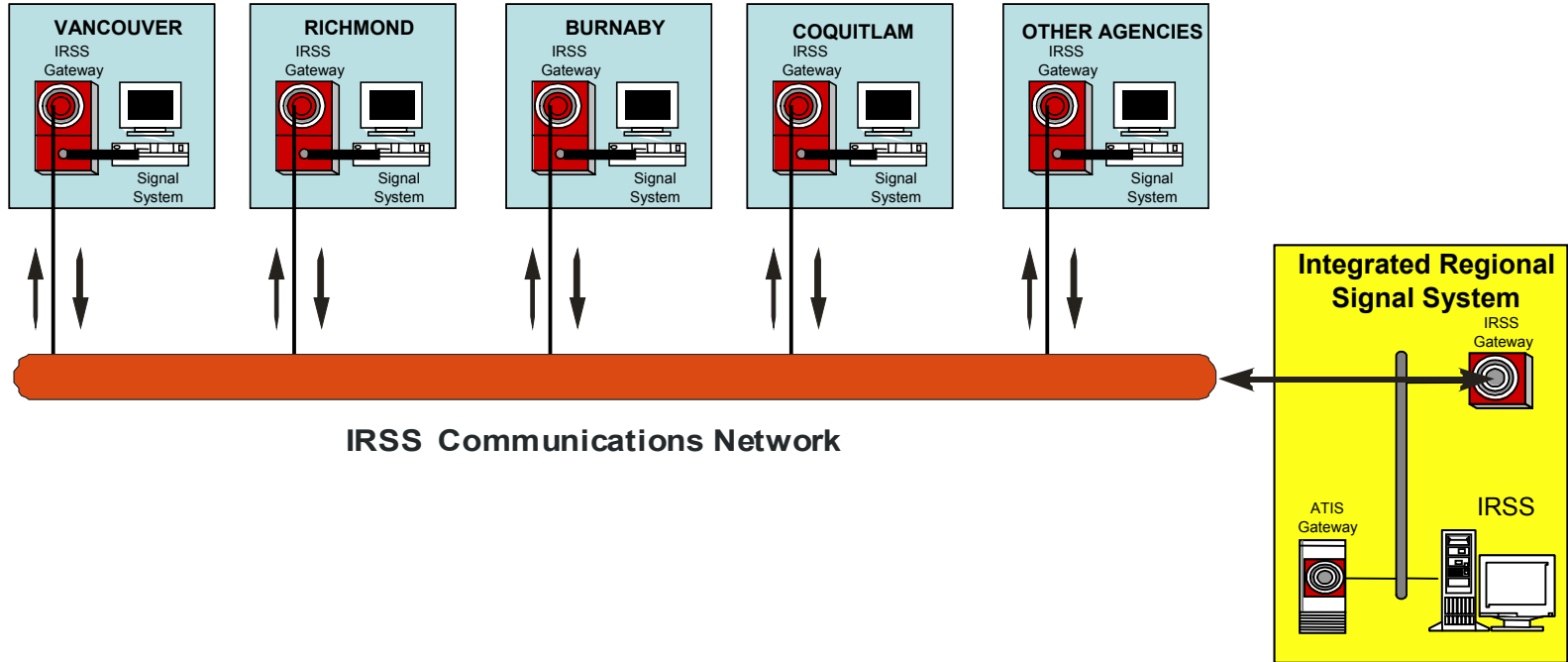
Provincial ITS Architecture



BC ITS Strategic Plan

- Identified 23 ITS Initiatives
 - 66 Distinct Projects
- Initiative 1 – Regional Traffic Management
 - Freeway Incident Management System
 - Integrated Regional Signal System
 - Arterial Traffic Management System
 - Portable Traffic Management for Construction Zones
 - Adaptive Traffic Signal Control System

Preliminary System Concept



Barriers to Integration

- Consensus building among agencies
 - Multiple agencies involved
- Proprietary technology of legacy systems
 - Dependent on supplier cooperation
- 'Isolated' MoT intersections
 - Need for system integration

Opportunities

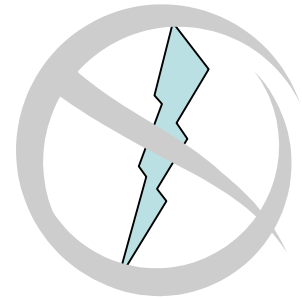
- Improve inter-agency cooperation and coordination
- Improve accessibility to timely and accurate traffic data
- Reduce vehicle delays and congestion
- Linking is first step to achieving regional traffic management benefits through:
 - Traveller Information
 - Incident Management
 - Transit Signal Priority
 - etc.

Regional Traffic Management Centre (RTMC)



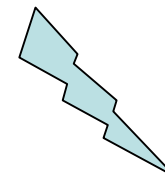
Traditional TMC

- Standalone systems
- Lack of interoperability between agencies
- Adoption of different standards and protocols



RTMC Objectives

- Improves coordination
- Supports multiple centres/nodes
- Multiple agencies/vendors
- Encourages data sharing
- Open system – scalable, interoperable



RTMC Roles

- Centre for monitoring and traffic control
- Clearinghouse for data / information exchange
- Provides coordination between travel modes
- Provides support for other transportation programs



Regional Advanced Traveller Information System (RATIS)



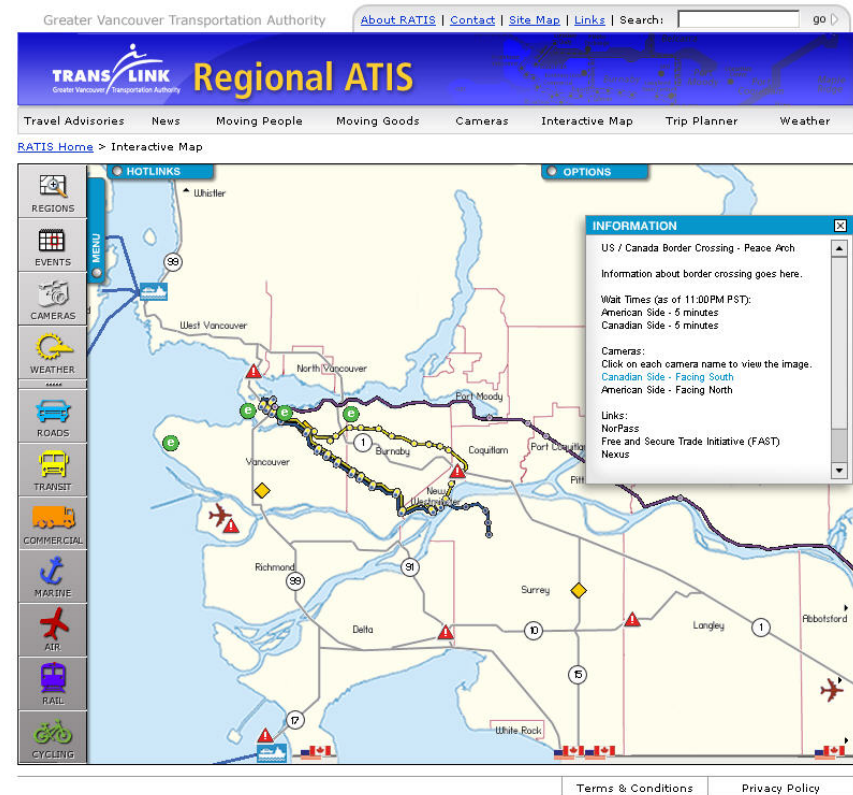
What is RATIS?

- Regional network to exchange multi-modal transportation information in real-time
- It is a privileged internet for transportation and emergency service agencies, provide multi-modal real time information at their fingertips
- Provides a data feed for information service providers (ISPs) to enable wide dissemination of traveler information

RATIS

➤ RATIS Provides:

- Real-time traffic status
 - Incident/closure/events
 - CCTV images
 - Travel time
 - Border wait time
 - Service disruptions
 - Parking
- Travel mode information
- Travel planner / mode choice tool



Greater Vancouver Transportation Authority | About RATIS | Contact | Site Map | Links | Search: [] go

TRANS LINK Regional ATIS
Greater Vancouver Transportation Authority

Travel Advisories | News | Moving People | Moving Goods | Cameras | Interactive Map | Trip Planner | Weather

RATIS Home > Interactive Map

INFORMATION

US / Canada Border Crossing - Peace Arch

Information about border crossing goes here.

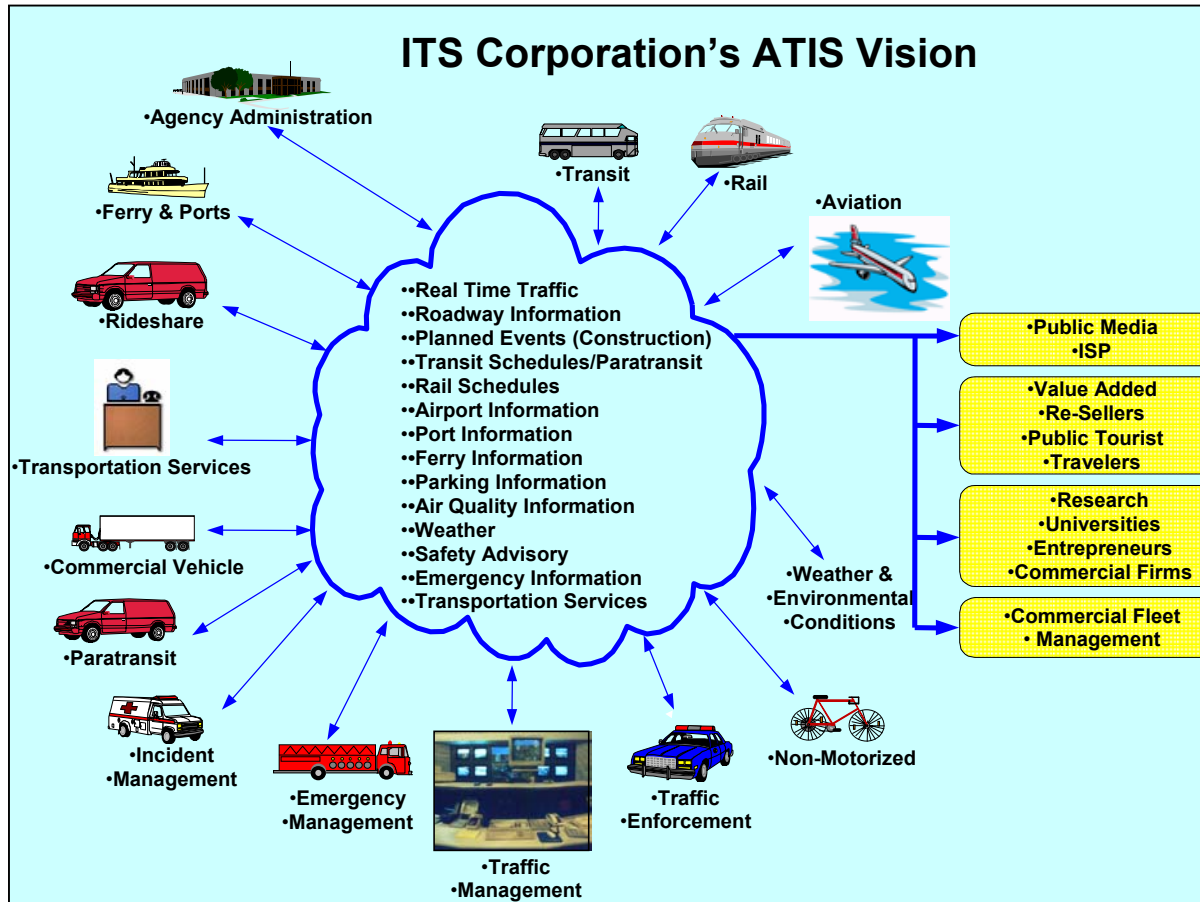
Wait Times (as of 11:00PM PST):
 American Side - 5 minutes
 Canadian Side - 5 minutes

Cameras:
 Click on each camera name to view the image.
 Canadian Side - Facing South
 American Side - Facing North

Links:
 NorPass
 Free and Secure Trade Initiative (FAST)
 Nexus

Terms & Conditions | Privacy Policy

RATIS



Fully Integrated - All Modes All Roads

RATIS for Greater Vancouver Area

Greater Vancouver Transportation Authority [About RATIS](#) | [Contact](#) | [Site Map](#) | [Links](#) | Search: go >

- Travel Advisories
- News
- Moving People
- Moving Goods
- Cameras
- Interactive Map

[RATIS Home](#)

Regional Advanced Transportation Information System
Welcome

Welcome to the Greater Vancouver Area Regional Advanced Traffic Information System web portal, brought to you by Translink. This portal provides access to information regarding transportation in and around the Greater Vancouver Area, including an interactive map showing current traffic incidents, images from 200 traffic cameras located throughout the region and route and access information for all major modes of transportation, including road, rail, air and marine.

Travel Advisories



This will be a short blurb about the travel advisories section of the website. This will inform new users on what functionality this will provide for users.

[There are currently 27 reported advisories.](#)

Cameras



This will be a short blurb about the cameras section of the website. This will inform new users on what functionality this will provide for users.

[There are currently 126 active cameras.](#)

Interactive Map



This will be a short blurb about the interactive map section of the website. This will inform new users on what functionality this will provide for users.

Greater Vancouver Transportation Authority [About RATIS](#) | [Contact](#) | [Site Map](#) | [Links](#) | Search: go >

Travel Advisories News Moving People Moving Goods Cameras

[RATIS Home](#) > [Moving People](#)

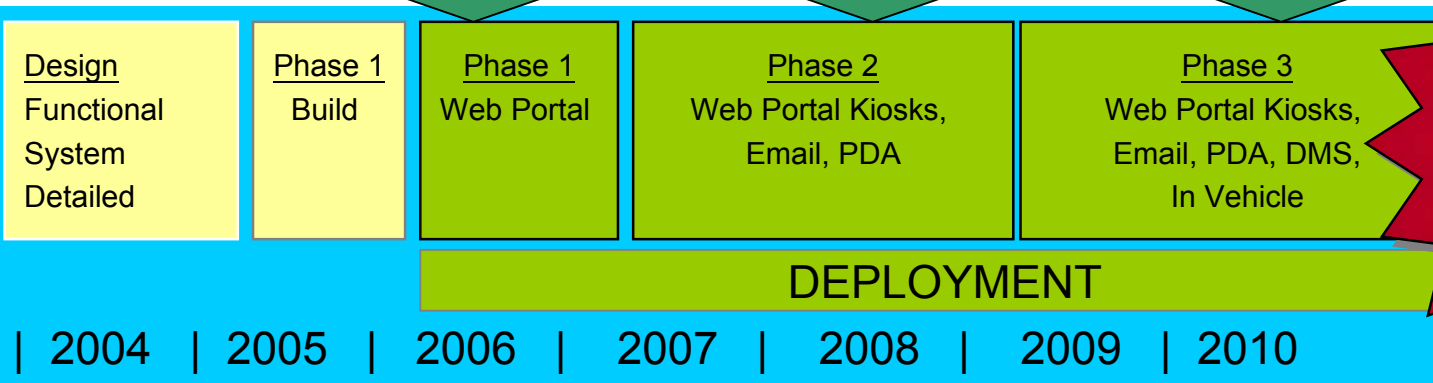
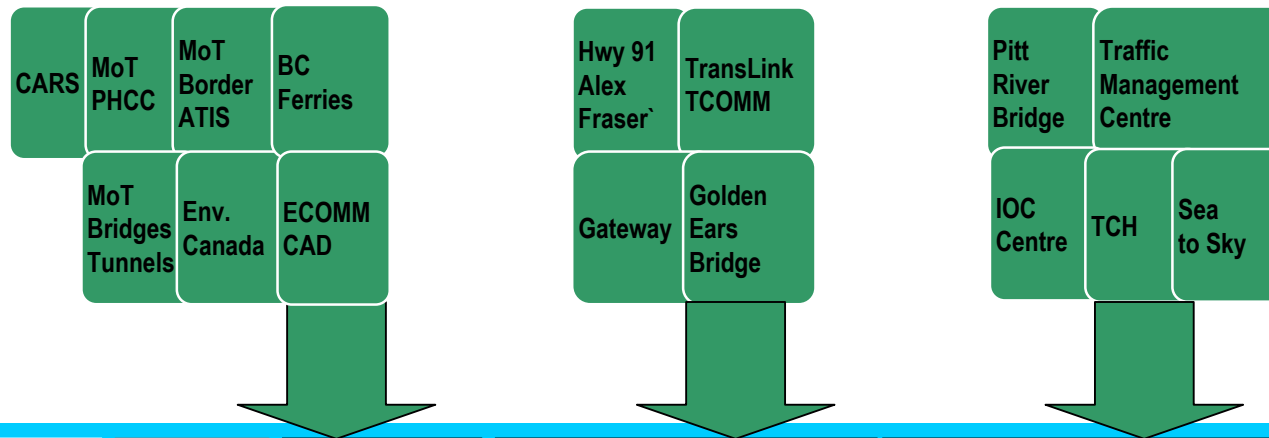
Moving People

Sections	Lorem ipsum dolor sit amet, consectetur adipiscing elit. Vivamus sit amet, molestie sed, ultrices eu, turpis. Vivamus tortor nulla, mi erat volutpat. Donec tincidunt porta justo. Nunc semper, lacus sed scelerisque sapien orci sed magna. Phasellus convallis, diam at sc	
Motorists		
Buses	Transit Buses	General Information
Rail	HandyDART	Transit Routes
Air	Community Shuttles	Schedules
Marine	West Vancouver Blue Buses	Fares & Zones
Cycling	Commercial Bus Stations	in eget massa. Aliquam est. Integer mauris a risus. Donec ut elit at sem
Handicapped Persons	Greyhound with service to Whistler	
Visitors	Pacific Coach Lines	
	Perimeter	
	Vancouver Trolley	



RATIS for Greater Vancouver Area

➤ RATIS Deployment



RATIS for Greater Vancouver Area

➤ RATIS Promotes :

- “One-Stop” transportation Portal
- Multi-Jurisdiction Coordination and Dissemination of transportation information:
 - Local Municipalities
 - Public Transit Authorities
 - Airport Authority
 - Port Authority
 - Provincial Ministry of Transportation

Conclusion

Regional Multi-Jurisdictional Stand-alone Traffic Management Integrated Traffic Management

- Innovative Concepts
- New Partnerships
- New Technologies
- Multi-Jurisdictional Co-operations
- Regional Integrations





TRANSPORTATION • INFORMATION TECHNOLOGY • WATER

www.delcan.net

Questions & Answers?

j.lam@delcan.com